

347/F

347/M

348/F

**LAMPENFASSUNG F. T8/T12 LINEARE LAMPEN**  
**ROUND LAMPHOLDERS FOR T8-T12 FLUORESCENT LINEAR LAMPS**

**Technische Daten**

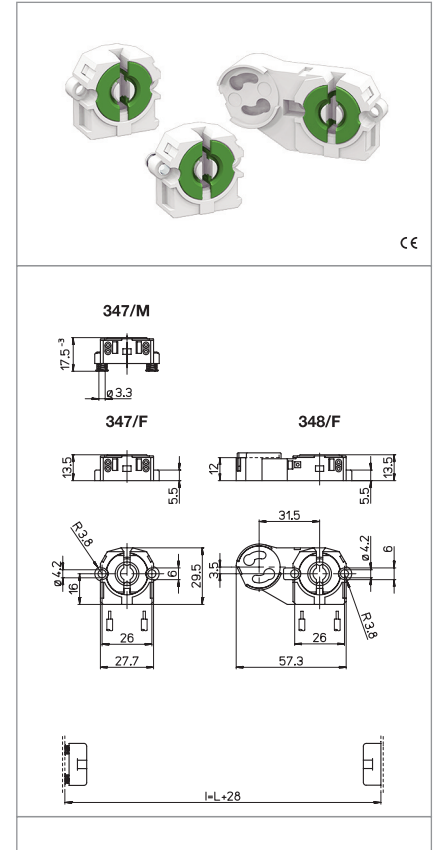
*Technical data*

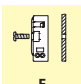
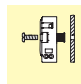



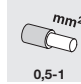
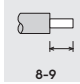
- LAMPENSOCKEL - Lamp cap	<b>G13</b>
- Nennstrom und Nennspannung - Rated current and voltage	<b>2A-250V</b>
- Maximale Betriebstemperatur (IEC) - Maximum operating temperature (IEC)	<b>T130 Tm110</b>
- Schutzgrad - Protection index	<b>IP20</b>
- Überspannungskategorie - Impulse withstand category	<b>III</b>

**Merkmale**

*Characteristics*

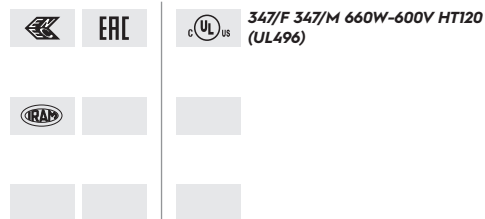
- Gehäuse aus polycarbonat, weiß  
- White polycarbonate body
- Kupferlegierte Kontakte  
- Copper alloy contacts



 Schraubbefestigung <i>fixing with screw, fixed</i>	 Schraubbefestigung, einstellbar <i>fixing with screw, adjustable</i>	 Materialdicke <i>thickness</i> 13,5	 Rotor aus PBT in grün in Rastposition... PBT green rotor with position of...
 Steckkontakte mit 2 Löchern <i>push-wire terminals with 2 holes</i>	 Feste Leitungsabschnitte <i>rigid conductor section</i> 0,5-1	 Leitungsabsolierung <i>rigid wires stripping</i> 8-9	

**Prüfzeichen**

*Quality marks*



**Europäische Richtlinien**

*European directives*

gemäß "RoHS"  
"RoHS" compliant  
unterliegt nicht "WEEE"  
Not subject to "WEEE"

**Gewichte und Verpackung**

*Weights and packaging*

Artikel/Art. Produktinweise Product references	g Nettogewicht Net weight	n° pz pro Beutel per bag	n° pz pro Box per box	n° pz pro Karton per carton
347/F	6,1	1000	200	
347/M	6,9	1000		
348/F	10		200	

**Bemerkung**

*Notes*